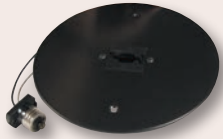


# General Track Accessories

## General Track Accessories

B = Black Finish    BZ = Bronze Finish    N = Nickel Finish    W = White Finish

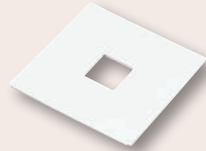


**Track Adapter Trim**

**EP576W** White  
Allows a **Low Voltage** track fixture to be installed on a standard 6" recessed housing. Includes 12V 75W electronic transformer. 7 1/2" O.D.

**EP577B** Black

**EP577W** White  
Allows a **Line Voltage** track fixture to be installed on a standard 6" recessed housing. 7 1/2" O.D.



**Outlet Box Cover**

**EP800W, B, BZ**



**Line Voltage Monopoint Canopy**

**EP811W, B, BZ, N**



**Monopoint Canopy**

**EP816W, B, BZ, N**  
For **Low Voltage** fixtures with transformer.



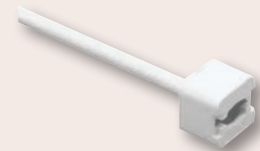
**Round Monopoint Canopy**

**EP819W, B**  
For **Line Voltage** fixtures.



**Weighted Base Monopoint**

**EP829W, B**  
**Line Voltage**



**Extension Ward**

**EP882W, B** 12" length  
**EP818W, B** 18" length  
**EP824W, B** 24" length  
**EP836W, B** 36" length  
**EP848W, B** 48" length  
Extends line voltage fixtures from 1 or 2 circuit track or EP811/EP819 Monopoint. Also extends a Track-22 fixture from EP900 transformer.



**48" Steel Stem**

**EP904W, B**  
Adds additional pendant length to EP918, 924, 936, 948 Pendant.



**Pendant Assembly**

**EP918W, B** 18" length  
**EP924W, B** 24" length  
**EP936W, B** 36" length  
**EP948W, B** 48" length  
Suspends track from ceiling.



**Track Pendant Kit**

**EP960W, B**  
With 60" stainless steel cable.



**T-Bar Attachment Clip**

**EP989B**



**Clamp with 6 ft. Cord and Plug**

**EP903W** Black  
**EP903B** White  
Clamp with 6 ft. Cord and Plug. With female track connector for attaching a **Line Voltage** fixture.



**Clamp with 6 ft. Cord and Track Adapter**

**EP907W** White  
**EP907B** Black  
Connects to line voltage track. Includes female track connector for attaching a **Line Voltage** fixture.



**Sloped Ceiling Pendant Adapter**

**EP905W, B**  
Use with EP918, 924, 936, 948 Pendant Assembly.